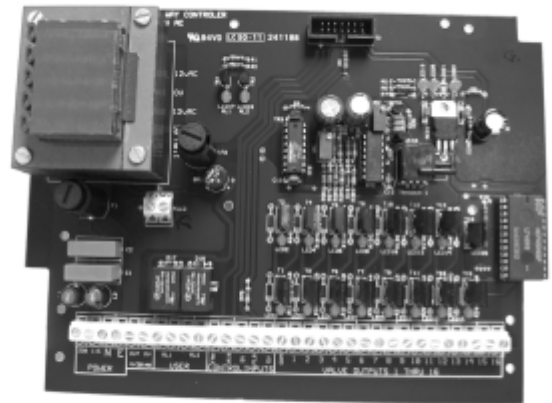


Product Data Sheet

KX74161

Up To 16-way Valve Controller



OVERVIEW

- *The **KX** range is designed to serve reverse jet dust extraction systems and formulated specifically to address their needs. The **KX74161 Valve Controller** is a fully self-contained solution to multi-valve control incorporating differential pressure sensing. This unit offers the latest in Microprocessor technology in a compact enclosure, affording unparalleled levels of user friendliness, system flexibility and tamper-proof operation.*
- *The **KX74161 Valve Controller** takes care of system control. Using just four pushbuttons and the high resolution LCD Display, all aspects of system operation can easily be programmed for optimum performance. A tamper-proof version of the Controller is available. The **KX74161** is offered in a polycarbonate IP65 enclosure.*

Features

ADVANCED MICRO-PROCESSOR CONTROL .

- Operating at over a million instructions per second the onboard micro-processor provides ease of use and a level of control which was virtually impossible with old plc or Cmos systems.

ONBOARD EPROM MEMORY

- Ensures system settings are retained during power failure or whilst power is turned off.

EASY TO USE 4 BUTTON CONTROL

- **MODE:** Move forward through options
- **UP:** Increases values selected by mode
- **DOWN:** Decreases values selected by mode
- **START/STOP:** Run or halt the system

HIGH RESOLUTION LCD DISPLAY

- Easily view and adjust system setup.
- Displays pressure readings in real time.
- Monitor system status

BUILT-IN DIFFERENTIAL PRESSURE SENSOR

- The KX74161 has it's own internal differential pressure sensor which allows the unit to clean only when needed. This also dispenses with the need for additional external devices.

REAL TIME SYSTEM MONITORING

- While the system is running, Differential Pressure and system status can be monitored in real time. Differential pressure is displayed constantly whenever the Controller is running along with the number of the current valve to be fired during the cleaning sequence.

One quick glance at the display will tell the operator the current state of the system and the current position in the cleaning sequence.

REAL TIME SYSTEM MONITORING

BUILT-IN OUTPUT AMPLIFIERS AND POWER SUPPLY

- The unit has it's own internal power supply. Power output to solenoid valves is provided directly from the controller using the internal power amplifiers .

HIGH/LOW PRESSURE ALARMS

- The KX74161 has two relay outputs. These are activated when the differential pressure in the system reaches the user defined settings for a high alarm or low alarm situation.
- The relay outputs may be used to trigger any amount of external events and allow the system malfunction to be handled immediately and effectively. The dual relay system means that high and low pressure events may be handled differently and trigger a separate chain of events to warn of, and handle the situation.
- The units LCD display will carry a warning message if high or low pressure alarm levels are reached.

SEPARATE CLEANING CYCLE FOR SYSTEM FAN STOP

- A seperately programmable cleaning cycle is provided for optimum filter performance. This operates whilst the main system fan is not running and can be set to operate for a set number of cycles. It can also be disabled by setting the number of cycles to 0.

Features - contd.

4-20 MILLIAMP OUTPUT

- The unit features a 4-20mA output which may be used to send pressure information to other devices or system controllers. This feature enables the KX74161 to communicate with any device that will accept this type of input and allow integration into virtually any application.

REMOTE CONTROL

- The KX74161 has the facility for remote start/stop. It can be remotely started/stopped via the 5v and REM terminals. The unit is arranged so that the pulsing will start as soon as an open circuit is established across 5v and REM. If the controller is in DP Sensor mode, the remote start/stop facility still functions in conjunction with the Differential Pressure (DP) set points.

Technical Specifications - KX74161-G10

CONTROLLER:	Part Number KX74161-G10-E20
INPUT SUPPLY:	24 VDC \pm 10%.
INPUT FUSE:	F3 Axial 2 Amp (T) Time Lag.
INPUT CONNECTIONS:	3-Way 1.5mm 10 Amp side entry plug and socket insulated terminal block which is marked: 0V, 24 VDC.
MAINS FAILURE:	In the event of mains failure, the unit will operate to specification as soon as the voltage level comes within the above limits.
OUTPUT VOLTAGE:	24V DC, regulation as input.
OUTPUT LOAD PER OUTLET:	36W continuous, 44W pulsed into solenoid valves.
I.O. CONNECTIONS:	1.5mm 10 Amp side entry plug and socket insulated terminal block which is marked: out 0v, 4-20ma, <i>alarms</i> : marked: alarms r11, r12 <i>control inputs</i> : marked: control inputs fan, rem, 5v, flow, 5v, <i>valve outputs</i> : marked: valve outputs 1-16 and common.
DP PRESSURE CONNECTIONS:	2 x 5mm (outside diam) pneumatic compression connectors suitable to accept nylon hose.
START UP SEQUENCE:	The unit is arranged so that it will always start at output 1.
PRESSURE SCALE:	0 - 700mmWG.
CONSTRUCTION:	Solid state microprocessor components mounted onto a double-sided glass fibre P.C.B. with component mask.
INDICATION:	Valve Numbers 1- 16 will be displayed as each output is energised in sequence.
AMBIENT TEMPERATURE AT BOARD SURFACE:	0 to +45 deg.C. Storage Temperature: -10 to +60 deg.C.
VIBRATION SPEC:	Not greater than BEAMA Group 2.
CONDUCTING MATERIALS:	Standard P.C.B's can be supplied with their surfaces coated with a layer of Parylene C, a material that is to MOD standard 59-47/4, and MIL-1-460C. This treatment reduces the risk of damage through moisture.
MICRO-PRO SEQUENCER:	Hinge opening Polycarbonate box with clear LCD window. Lower panel with 2 retaining screws houses terminals. Size 195 x 94 x 160mm.

Technical Specifications - KX74161-G15

CONTROLLER:	Part Number KX74161-G15-E20
INPUT SUPPLY:	115 - 230 V +10% -15% @ 50/60HZ.
INPUT FUSE:	Fuse 1: 1 Amp 230 V HBC 20mm .
VALVE OUTPUT FUSE:	Fuse 2: 2 Amp 24 V (T) Time Lag.
INPUT CONNECTIONS:	3-Way 1.5mm 10 Amp side entry plug and socket insulated terminal block which is marked: 230, 115, Neut .
MAINS FAILURE:	In the event of mains failure, the unit will operate to specification as soon as the voltage level comes within the above limits.
OUTPUT VOLTAGE:	24V DC, regulated.
OUTPUT LOAD PER OUTLET:	36W continuous, 44W pulsed into solenoid valves.
I.O. CONNECTIONS:	1.5mm 10 Amp side entry plug and socket insulated terminal block which is marked: out 0v, 4-20ma, <i>alarms</i> : marked: alarms r11, r12 <i>control inputs</i> : marked: control inputs fan, rem, 5v, flow, 5v, <i>valve outputs</i> : marked: valve outputs 1-16 and common.
DP PRESSURE CONNECTIONS:	2 x 5mm (outside diam) pneumatic compression connectors suitable to accept nylon hose.
START UP SEQUENCE:	The unit is arranged so that it will always start at output 1.
PRESSURE SCALE:	0 - 700mmWG.
CONSTRUCTION:	Solid state microprocessor components mounted onto a double-sided glass fibre P.C.B. with component mask.
INDICATION:	Valve Numbers 1- 16 will be displayed as each output is energised in sequence.
AMBIENT TEMPERATURE AT BOARD SURFACE:	0 to +45 deg.C. Storage Temperature: -10 to +60 deg.C.
VIBRATION SPEC:	Not greater than BEAMA Group 2.
CONDUCTING MATERIALS:	Standard P.C.B's can be supplied with their surfaces coated with a layer of Parylene C, a material that is to MOD standard 59-47/4, and MIL-1-460C. This treatment reduces the risk of damage through moisture.
MICRO-PRO SEQUENCER:	Hinge opening Polycarbonate box with clear LCD window. Lower panel with 2 retaining screws houses terminals. Size 195 x 94 x 160mm.

Technical Specifications - KX74161-G4

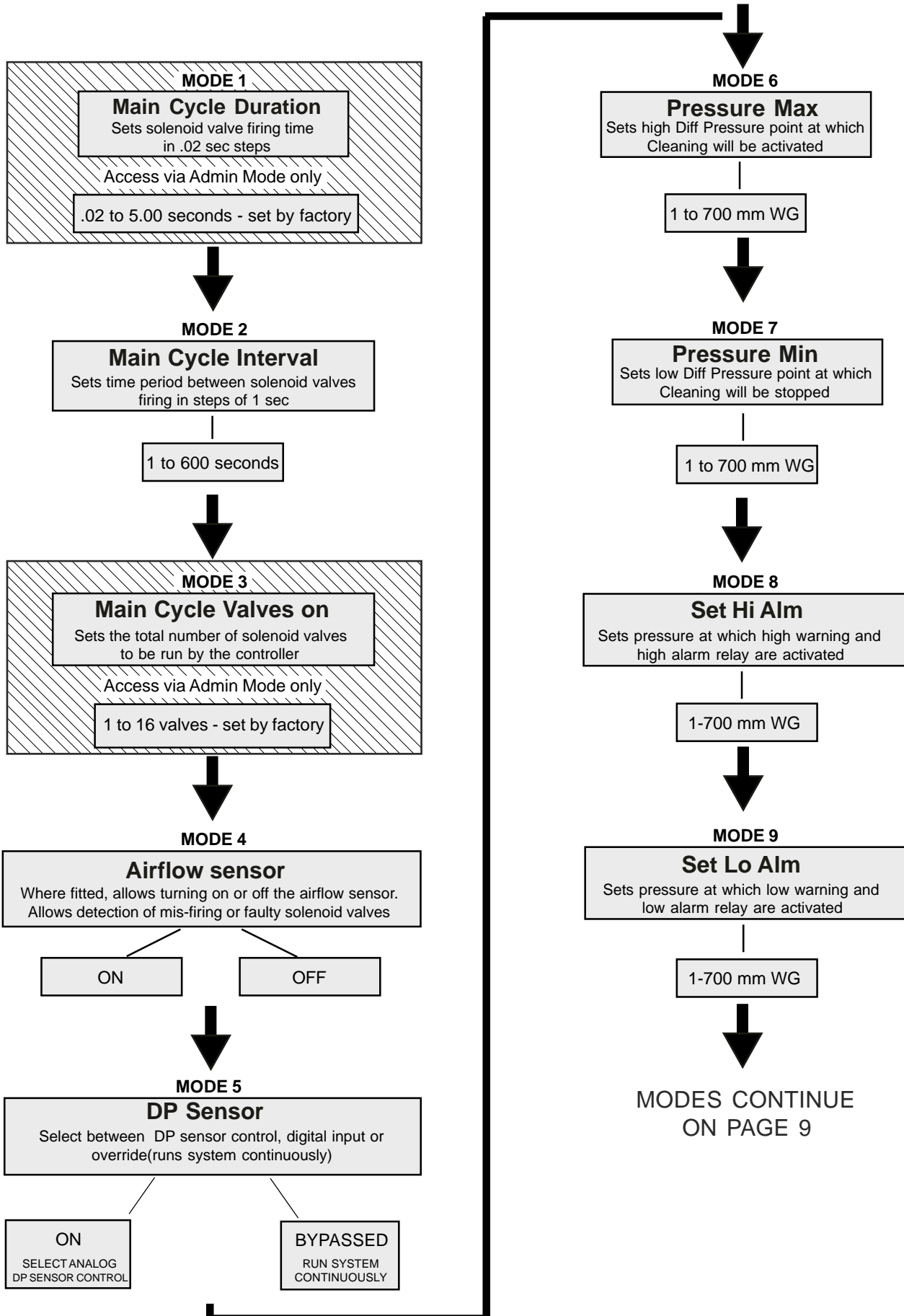
CONTROLLER:	Part Number KX74161-G4-E20
INPUT SUPPLY:	115 - 230 V +10% -15% @ 50/60HZ.
INPUT FUSES:	Fuse 1: 1 Amp 230 V HBC 20mm . Fuse 2: 1 Amp 230 V HBC 20mm .
INPUT CONNECTIONS:	3-Way 1.5mm 10 Amp side entry plug and socket insulated terminal block which is marked: 230, 115, Neut .
MAINS FAILURE:	In the event of mains failure, the unit will operate to specification as soon as the voltage level comes within the above limits.
OUTPUT VOLTAGE:	110Vac.
OUTPUT LOAD PER OUTLET:	24VA continuous, 40VA pulsed into solenoid valves.
I.O. CONNECTIONS:	1.5mm 10 Amp side entry plug and socket insulated terminal block which is marked: out 0v, 4-20ma, <i>alarms</i> : marked: alarms r11, r12 <i>control inputs</i> : marked: control inputs fan, rem, 5v, flow, 5v, <i>valve outputs</i> : marked: valve outputs 1-16 and common.
DP PRESSURE CONNECTIONS:	2 x 5mm (outside diam) pneumatic compression connectors suitable to accept nylon hose.
START UP SEQUENCE:	The unit is arranged so that it will always start at output 1.
PRESSURE SCALE:	0 - 700mmWG.
CONSTRUCTION:	Solid state microprocessor components mounted onto a double-sided glass fibre P.C.B. with component mask. Valve Numbers 1- 16 will be displayed as each output is energised in sequence.
INDICATION:	
AMBIENT TEMPERATURE AT BOARD SURFACE:	0 to +45 deg.C. Storage Temperature: -10 to +60 deg.C.
VIBRATION SPEC:	Not greater than BEAMA Group 2.
CONDUCTING MATERIALS:	Standard P.C.B's can be supplied with their surfaces coated with a layer of Parylene C, a material that is to MOD standard 59-47/4, and MIL-1-460C. This treatment reduces the risk of damage through moisture.
MICRO-PRO SEQUENCER:	Hinge opening Polycarbonate box with clear LCD window. Lower panel with 2 retaining screws houses terminals. Size 195 x 94 x 160mm.

Technical Specifications - KX74161-G31

CONTROLLER:	Part Number KX74161-G31-E20
INPUT SUPPLY:	115 - 230 V +10% -15% @ 50/60HZ.
INPUT FUSES:	Fuse 1: 1 Amp 230 V HBC 20mm . Fuse 2: 1 Amp 230 V HBC 20mm .
INPUT CONNECTIONS:	3-Way 1.5mm 10 Amp side entry plug and socket insulated terminal block which is marked: 230, 115, Neut .
MAINS FAILURE:	In the event of mains failure, the unit will operate to specification as soon as the voltage level comes within the above limits.
OUTPUT VOLTAGE:	24Vac.
OUTPUT LOAD PER OUTLET:	24VA continuous, 40VA pulsed into solenoid valves.
I.O. CONNECTIONS:	1.5mm 10 Amp side entry plug and socket insulated terminal block which is marked: out 0v, 4-20ma, <i>alarms</i> : marked: alarms r11, r12 <i>control inputs</i> : marked: control inputs fan, rem, 5v, flow, 5v, <i>valve outputs</i> : marked: valve outputs 1-16 and common.
DP PRESSURE CONNECTIONS:	2 x 5mm (outside diam) pneumatic compression connectors suitable to accept nylon hose.
START UP SEQUENCE:	The unit is arranged so that it will always start at output 1.
PRESSURE SCALE:	0 - 700mmWG.
CONSTRUCTION:	Solid state microprocessor components mounted onto a double-sided glass fibre P.C.B. with component mask.
INDICATION:	Valve Numbers 1- 16 will be displayed as each output is energised in sequence.
AMBIENT TEMPERATURE AT BOARD SURFACE:	0 to +45 deg.C. Storage Temperature: -10 to +60 deg.C.
VIBRATION SPEC:	Not greater than BEAMA Group 2.
CONDUCTING MATERIALS:	Standard P.C.B's can be supplied with their surfaces coated with a layer of Parylene C, a material that is to MOD standard 59-47/4, and MIL-1-460C. This treatment reduces the risk of damage through moisture.
MICRO-PRO SEQUENCER:	Hinge opening Polycarbonate box with clear LCD window. Lower panel with 2 retaining screws houses terminals. Size 195 x 94 x 160mm.

Programmable features

The following is a flow chart of the programmable settings available on the KX74161 Valve Controller. The options available in each mode are explained in an easy to follow format.



Programmable features - contd.

MODE 10

Fan Rundown Cycle Num Cycles

Sets the total number of cleaning cycles initiated by a fan stop period

0 to 15 cycles

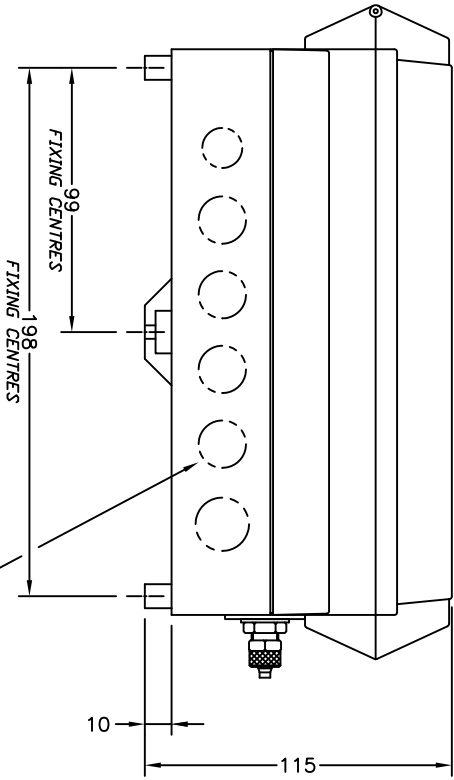
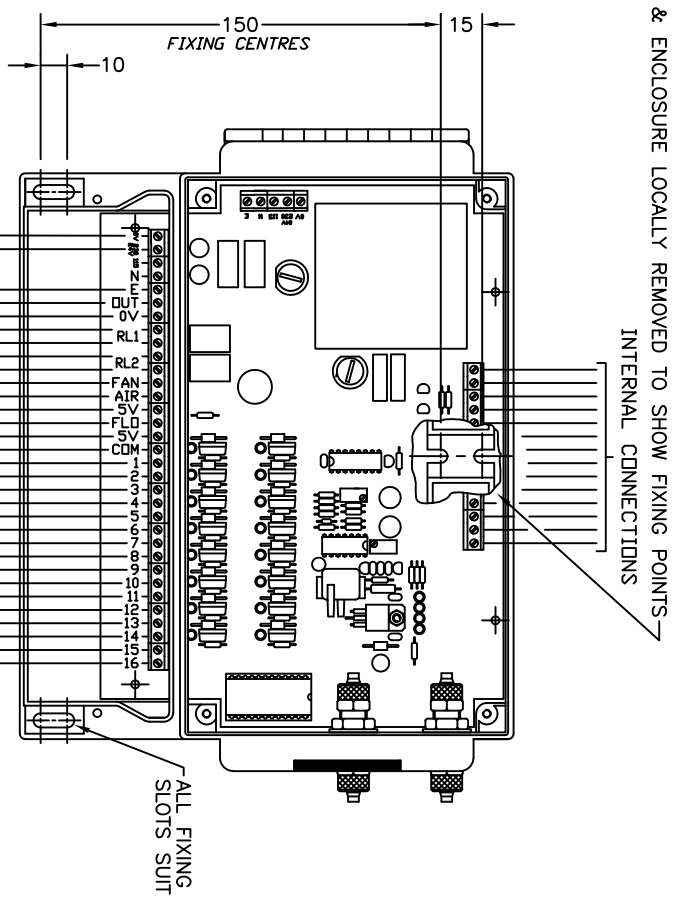
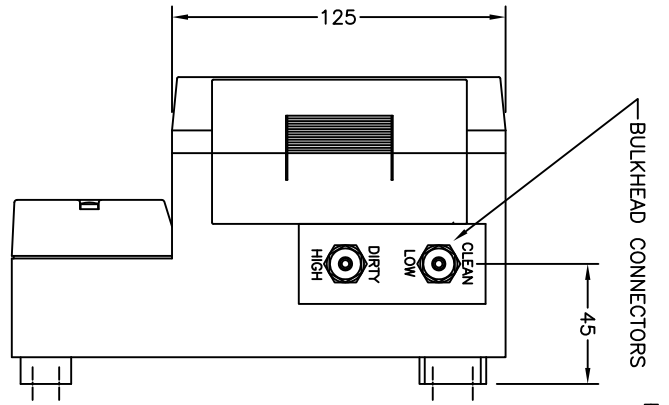
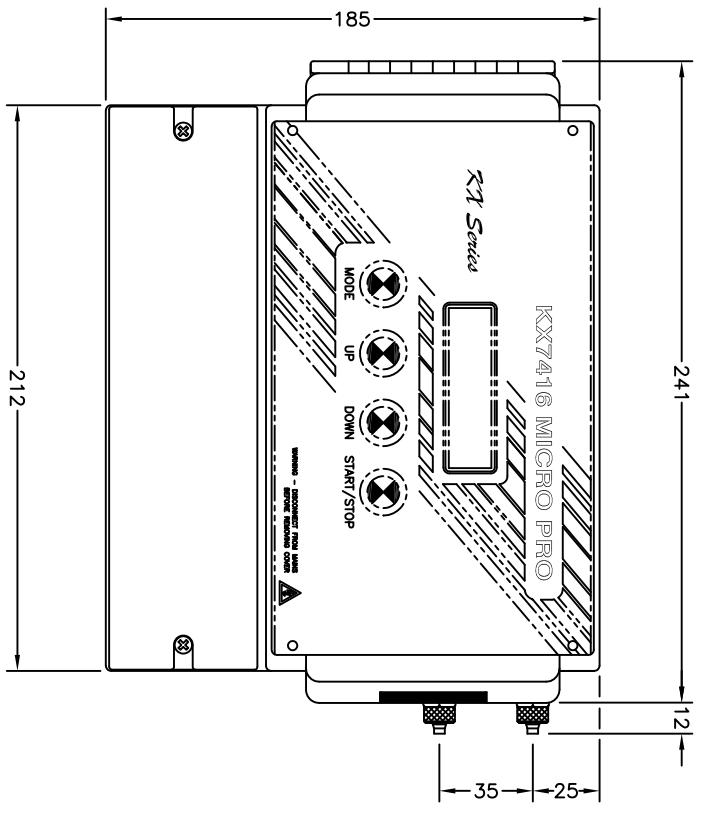
MODE 11

Fan Rundown Cycle Interval

Sets time period between solenoid valves firing in steps of 1 sec

1 to 600 seconds

KX74161-G10



KNOCK-OUTS
5 EXTRA KNOCK-OUTS AVAILABLE
IN BOTTOM FACE OF ENCLOSURE

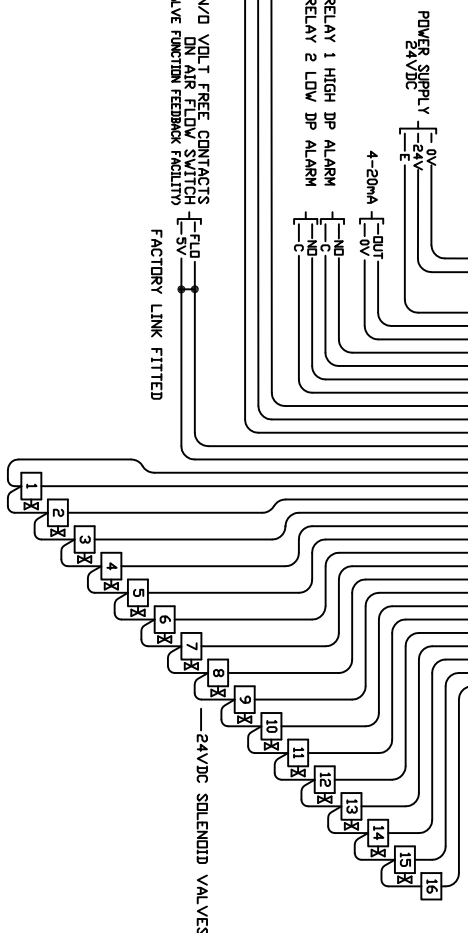
TO N/C VOLT FREE CONTACTS
ON FAN CONTACTOR
FOR FAN RUN-DOWN
REMOTE START/STOP
FOR REMOTE CONTROL

FAN
RPM
-5V

RELAYS [RELAY 1 HIGH DP ALARM
RELAY 2 LOW DP ALARM

TO N/O VOLT FREE CONTACTS
ON AIR FLOW SWITCH
FOR VALVE FUNCTION FEEDBACK FACILITY

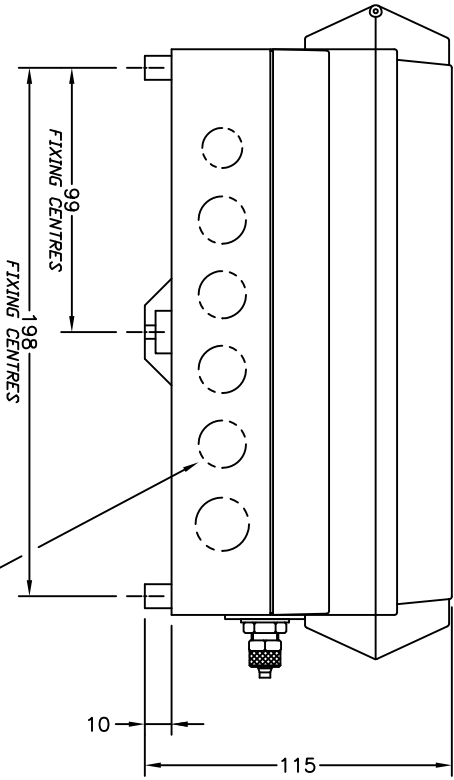
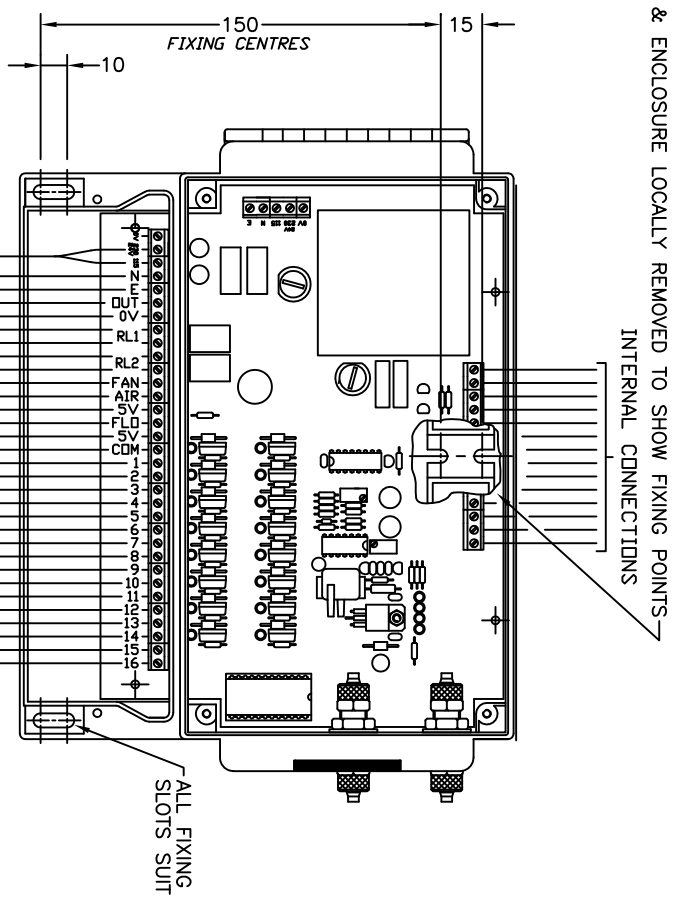
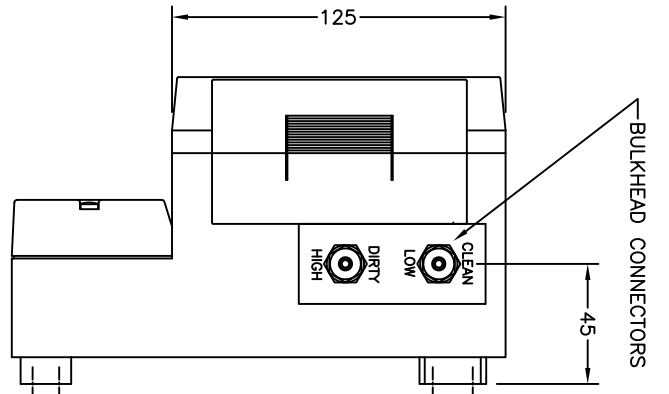
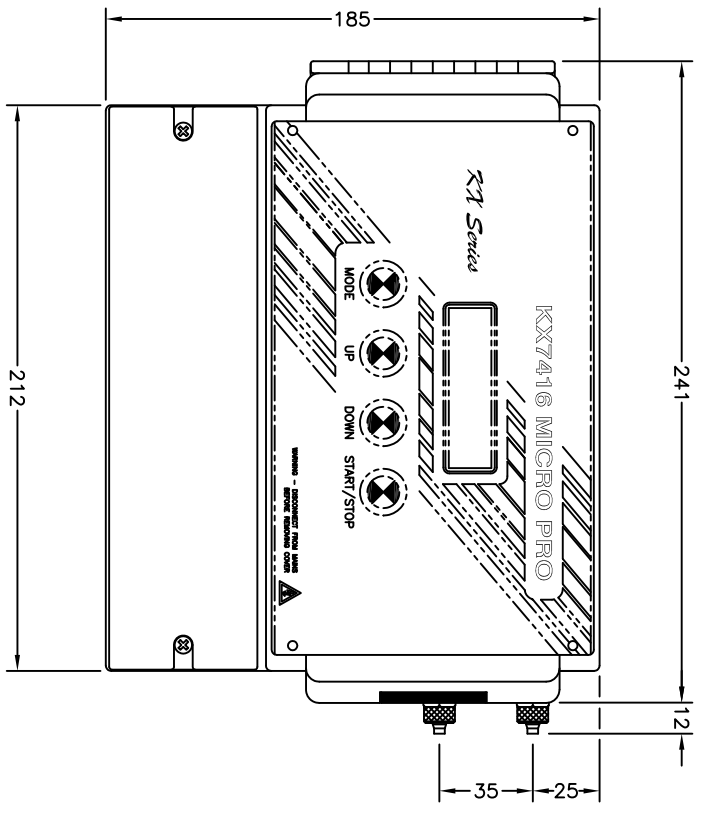
FLO
-5V
FACTORY LINK FITTED



VIEW WITH COVERS & DISPLAY PANEL OMITTED
TO SHOW FIXINGS & FIELD CONNECTIONS

ALL DIMENSIONS IN MILLIMETRES

KX74161-G15



TO N/C VOLT FREE CONTACTS
DN FAN CONTACTOR
REMOTE START/STOP
FOR REMOTE CONTROL

FAN
-REM
-5V

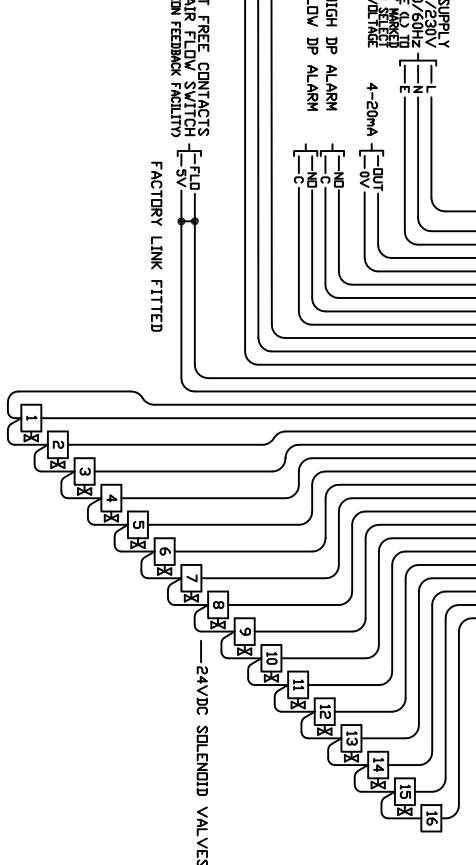
RELAYS
RELAY 1 HIGH DP ALARM
RELAY 2 LOW DP ALARM

POWER SUPPLY
110V/230V
50/60Hz
CONNECT LINE 42 TO
APPROPRIATELY RATED
TERMINAL BLOCK
FOR VOLTAGE

4-20mA
-OUT
-0V

TO N/O VOLT FREE CONTACTS
DN AIR FLOW SWITCH
FOR VALVE FUNCTION FEEDBACK FACILITY

FLO
-5V
FACTORY LINK FITTED

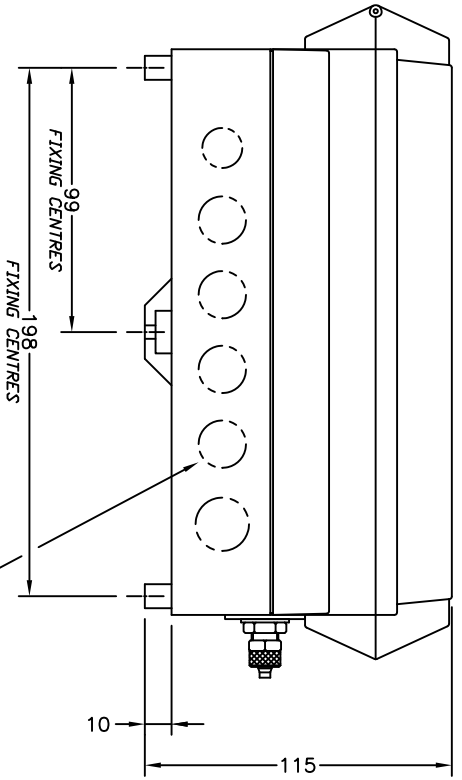
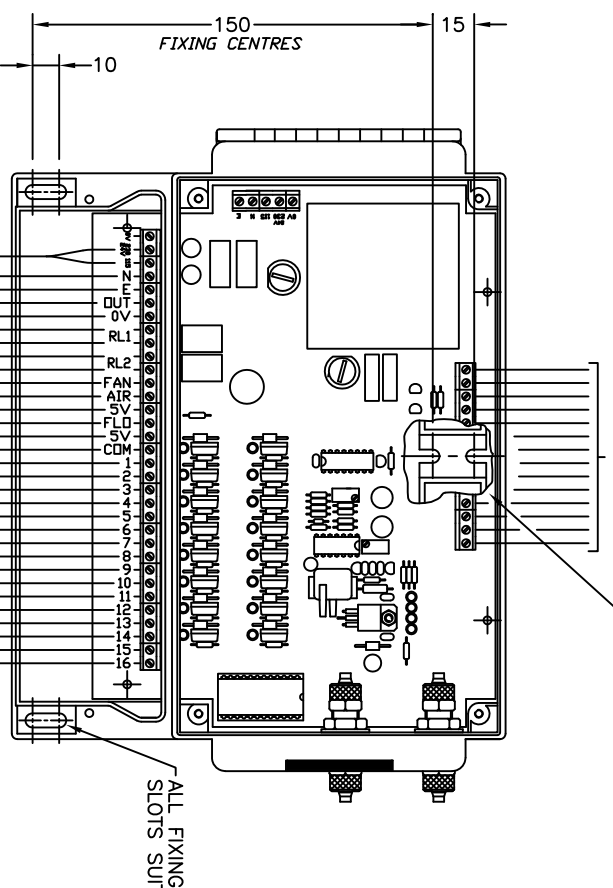
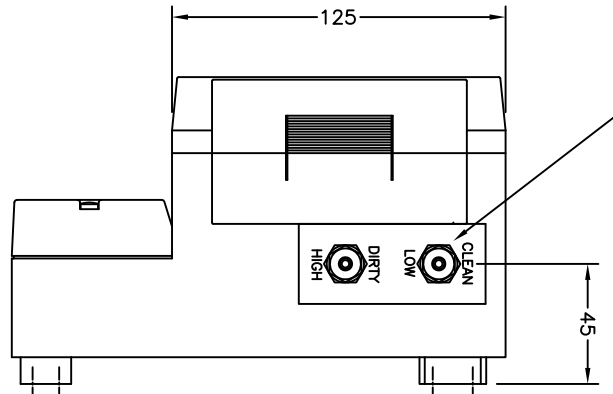
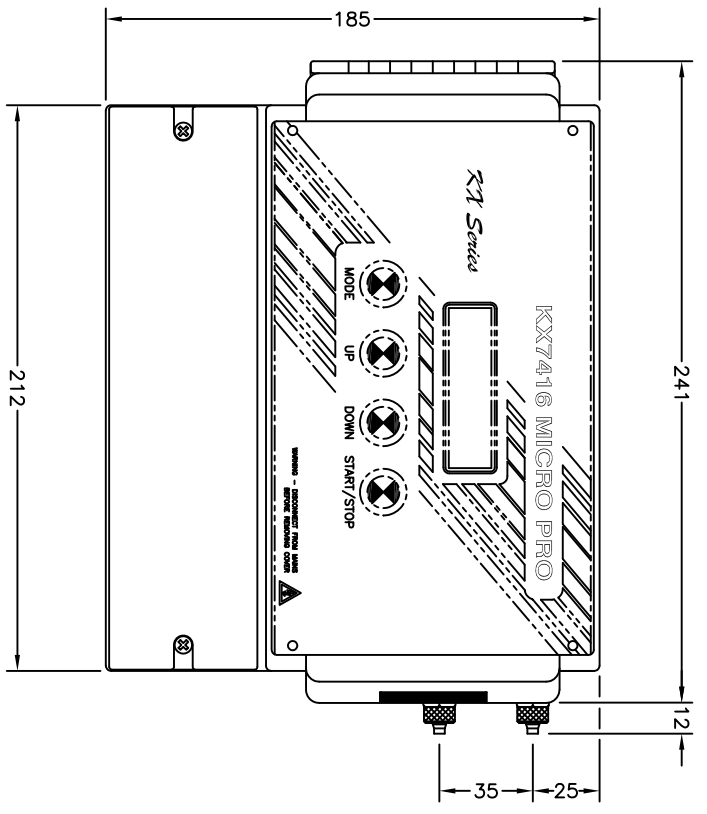


KNOCK-OUTS
5 EXTRA KNOCK-OUTS AVAILABLE
IN BOTTOM FACE OF ENCLOSURE

VIEW WITH COVERS & DISPLAY PANEL OMITTED
TO SHOW FIXINGS & FIELD CONNECTIONS

ALL DIMENSIONS IN MILLIMETRES

KX74161-G4



TO N/C VOLT FREE CONTACTS
ON FAN CONTACTOR
RELOCATE START/STOP
FOR REMOTE CONTROL

FAN
-REM
-SV

RELAYS -
RELAY 1 HIGH DP ALARM
RELAY 2 LOW DP ALARM

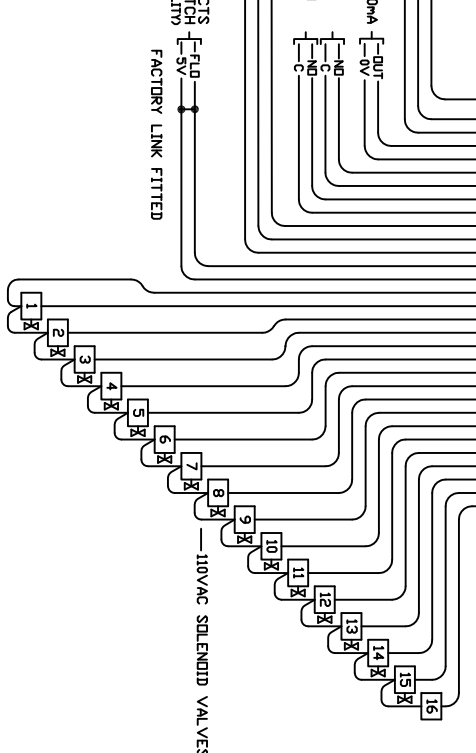
POWER SUPPLY
K100/30V
50/50Hz
CONNECT LINE 42 TO
APPROPRIATELY RATED
TERMINAL BLOCK
FOR VOLTAGE

4-20mA
-OUT
-0V
-ND
-NC
-C

TO N/O VOLT FREE CONTACTS
ON AIR FLOW SWITCH
FOR VALVE FUNCTION FEEDBACK FACILITY

AIR FLOW
-SW
-SV

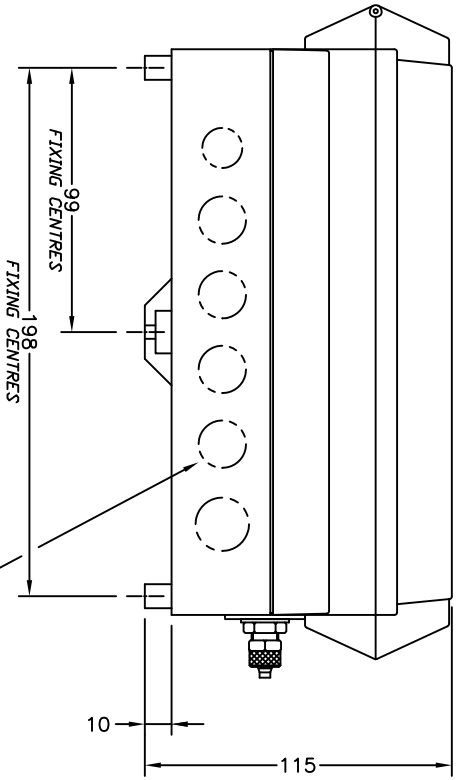
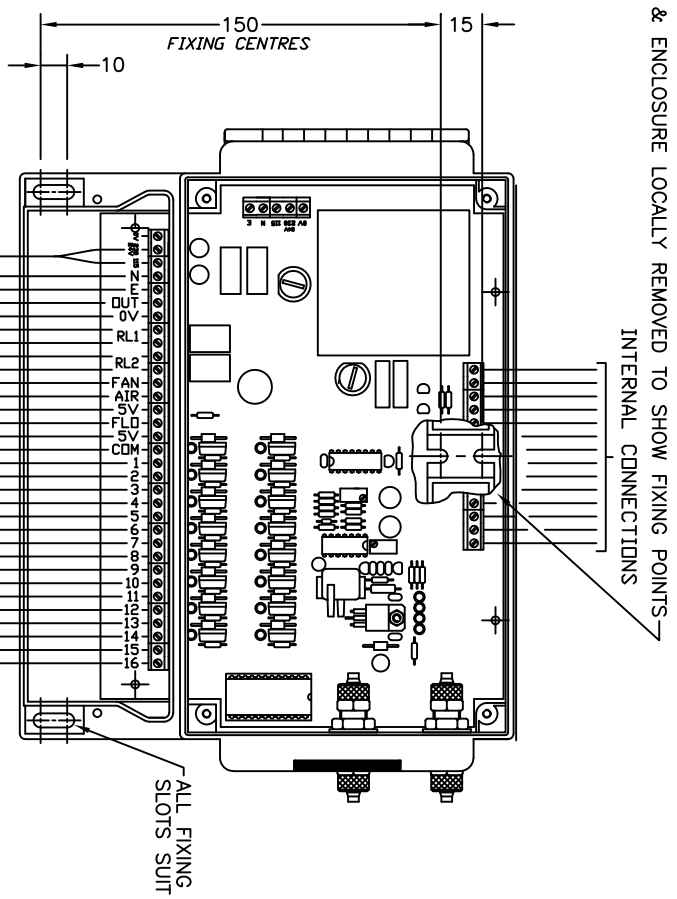
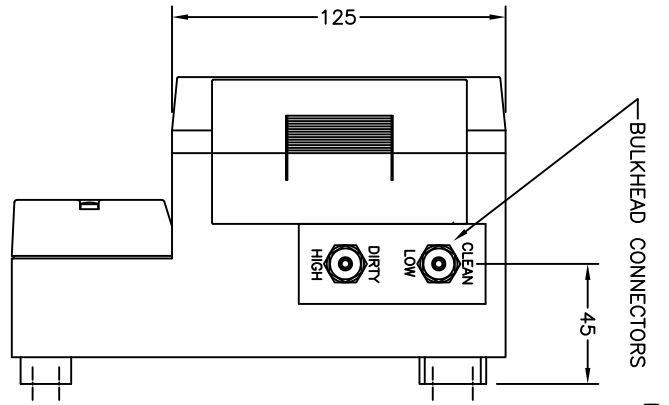
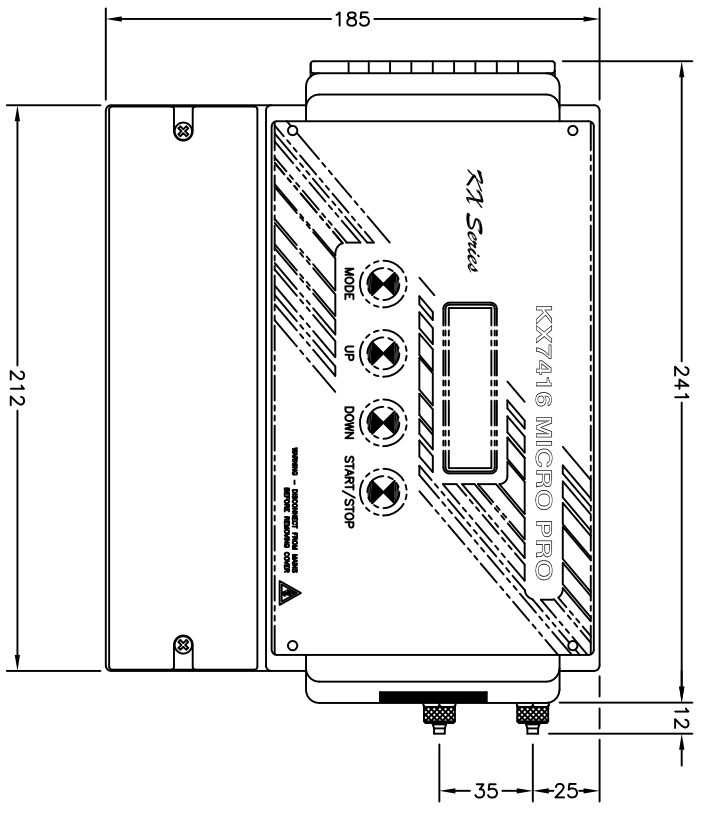
FACTORY LINK FITTED



VIEW WITH COVERS & DISPLAY PANEL OMITTED
TO SHOW FIXINGS & FIELD CONNECTIONS

ALL DIMENSIONS IN MILLIMETRES

KX74161-G31



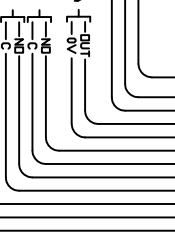
— KNOCK-OUTS
5 EXTRA KNOCK-OUTS AVAILABLE
IN BOTTOM FACE OF ENCLOSURE

TO N/C VOLT FREE CONTACTS
ON FAN CONTACTORS
FOR FAN RUN-DOWN
REMOTE START/STOP
FOR REMOTE CONTROL

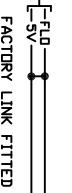


RELAYS [RELAY 1 HIGH DP ALARM
RELAY 2 LOW DP ALARM

POWER SUPPLY
110V/230V
50/60Hz
CONNECT LINE AND TO
APPROPRIATELY RATED
TERMINAL BLOCK
FOR VOLTAGE



TO N/O VOLT FREE CONTACTS
ON AIR FLOW SWITCH
FOR VALVE FUNCTION FEEDBACK FACILITY



VIEW WITH COVERS & DISPLAY PANEL OMITTED
TO SHOW FIXINGS & FIELD CONNECTIONS

ALL DIMENSIONS IN MILLIMETRES